

Tell us what you think about your future neighborhood park!



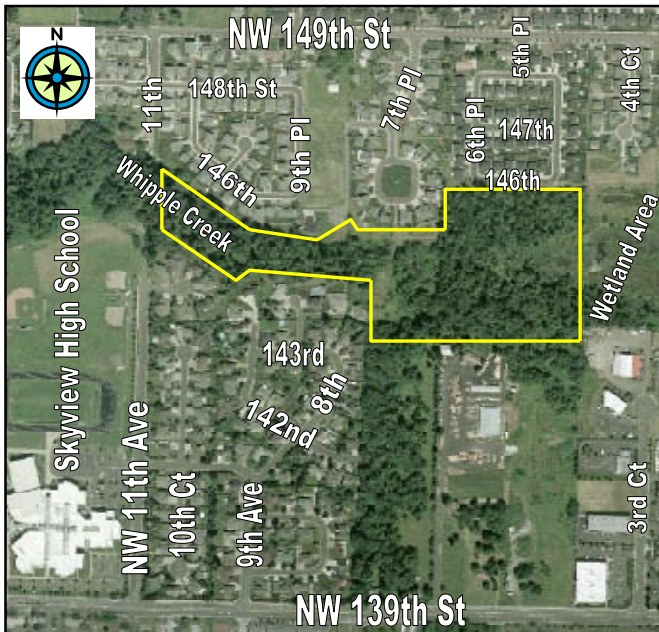
Clark County is getting ready to build a new park in your neighborhood, and we need your help!

Chinook Neighborhood Park runs along Whipple Creek between NW 11th Avenue and NW 5th Place, on the south side of NW 149th Street in the North Salmon Creek neighborhood.

This neighborhood park is five acres in size, and is currently a wooded area with a small clearing and a footbridge over Whipple Creek off of NW 7th Place.

Design is scheduled to begin this spring, with construction starting in 2008.

Aerial Map of Chinook Neighborhood Park



Design and construction of Chinook Neighborhood Park is being funded by park impact fees, which are paid whenever a new residential property is developed, and the real estate excise tax, which is paid whenever property is sold. Maintenance of the park will be funded by the Greater Clark Parks District, a special district approved and funded by voters in the unincorporated urban area of Clark County in 2005.

How We Design and Build Parks

The county sets the budget for each park project based on site-specific conditions such as wetlands, other natural features, and the need for curbs and sidewalks on adjacent streets. The approved budget also includes funding for typical neighborhood park features such as playground equipment, trails, picnic tables, landscaping, a sports court, and benches.

Project staff also relies on public participation to help guide park layout during design. Your input will:

- Help us understand the needs or concerns of your neighborhood.
- Help us understand which park features are most important to you and your neighbors.
- Help us learn about the potential for fundraising to enhance the park.

Please Fill Out Our Comment Form

Please take a few minutes to fill out the enclosed comment form about this park development project. **Your answers are very important, and will be used to help prepare a preliminary concept plan for this park. This plan will then be presented at an upcoming public meeting for input.** Our parks are designed for all ages and abilities, so please ask everyone in your household to help you fill it out.

We have included a postage-paid return envelope with this mailer for your convenience. If you prefer, you can fill out the comment form online by visiting this Web page: www.clarkparks.org/projects/chinook.htm

All responses must be received by March 31, 2007.

Enter to Win Regional Park Summer Parking Passes!

Win a set of five summer parking passes to Lewisville Regional Park, Salmon Creek Regional Park/Klineline Pond, and Frenchman's Bar Regional Park! These 15 parking passes (five for each park) are valued at \$30, and will be awarded to a single winner.

No purchase is necessary. Simply fill out the attached comment form, including your name and contact information, and mail it in the enclosed postage-paid return envelope to: Clark County Public Works, Attn: Jilayne Jordan, PO Box 9810, Vancouver, WA 98666. You can also enter online by visiting this Web page: www.clarkparks.org/projects/oakgrove.htm. Chances of winning depend on how many comment forms are returned by the deadline.

To be eligible for the prize drawing, mailed comment forms must be postmarked by March 31, 2007, and all Web page entries must be received by 5 p.m. on March 31, 2007. The winner will be selected by a random drawing on April 4, 2007, and will be notified the same day by telephone or e-mail. If the prize is not claimed within 14 days, another winner will be selected through a second random drawing of all remaining entries.

Project Contact Information

Matt Hall, Project Manager
Clark County Public Works
P.O. Box 9810
Vancouver, WA 98666
Phone: 360-397-6118 x. 4225
E-mail: Matt.Hall@clark.wa.gov

Or visit us on the Web: www.clarkparks.org



VANCOUVER-CLARK
**PARKS &
Recreation**