

**FAIRGROUNDS COMMUNITY PARK
100% CONSTRUCTION DOCUMENTS**

OWNER: CLARK COUNTY DEPT. OF PUBLIC WORKS
P.O. BOX 9910
VANCOUVER, WASHINGTON 98666
CONTACT: JERRY BARNETT (360) 397-6118 ext. 4069

APPLICANT: CLARK COUNTY DEPT. OF PUBLIC WORKS
P.O. BOX 9910
VANCOUVER, WASHINGTON 98666
CONTACT: JERRY BARNETT (360) 397-6118 ext. 4069



HDR Architecture, Inc.

1091 SW 5th Avenue | Suite 1600
Portland, Oregon 97204 | 503.423.3900



STATE OF WASHINGTON
REGISTERED
LANDSCAPE ARCHITECT

DAVID J. SACRAMENTO
CERTIFICATE NO. 027

SHEET TITLE

**SITE
IMPROVEMENT
PLAN**

DATE 11.07.2008

SCALE 1" = 80'

JOB # 74054

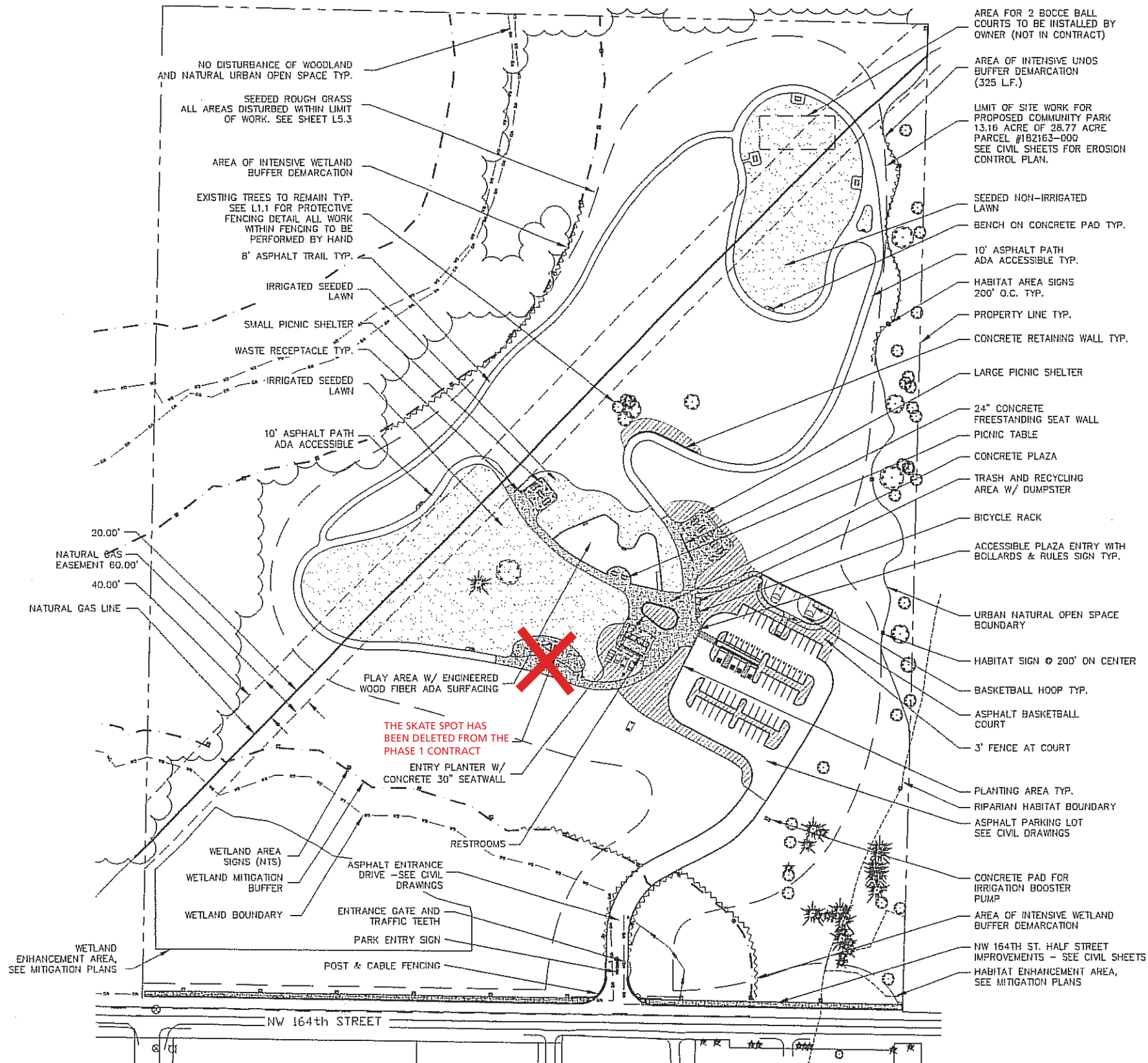
DWG BY: JMW

CID BY: DS

REVISIONS

SHEET NO.

L2.0



LEGEND

EDGE OF FOREST AREAS (APPROXIMATE)

NATURAL GAS EASEMENT

PROPERTY LINE

HIGH PRESSURE GAS LINE (SEE NOTES)

LIMIT OF WORK (L.O.W.) CORRESPONDS W/ SILT FENCE. SEE SHEET # C1 - 01 + C1 - 02.

WETLAND BOUNDARY

WETLAND BUFFER

INTENSIVE DEMARCATION OF WETLAND

PLANTING AREA SEE SHEET L5.4

SEEDED LAWN SEE SHEET L5.3

SEEDED ROUGH GRASS - ALL AREAS DISTURBED WITHIN LIMIT OF WORK SEE SHEET L5.3

CONCRETE PAVING

- NOTES:**
- PROJECT REQUIRES ELECTRICAL AND WATER SERVICE SEE CIVIL AND ELECTRICAL SHEETS.
 - CONTRACTOR SHALL BE RESPONSIBLE FOR SECURING DRIVEWAY DURING CONSTRUCTION WITH CHAIN LINK FENCING ALONG NW 164th.
 - IF ANY CULTURAL RESOURCES AND/OR HUMAN REMAINS ARE DISCOVERED IN THE COURSE OF UNDERTAKING THE DEVELOPMENT ACTIVITY, THE OFFICE OF ARCHAEOLOGY AND HISTORIC PRESERVATION IN OLYMPIA AND CLARK COUNTY COMMUNITY DEVELOPMENT SHALL BE NOTIFIED. FAILURE TO COMPLY WITH THESE STATE REQUIREMENTS MAY CONSTITUTE A CLASS C FELONY, SUBJECT TO IMPRISONMENT AND / OR FINES.
 - CLARK COUNTY WETLANDS PROTECTION ORDINANCE (CLARK COUNTY CODE CHAPTER 40.450) REQUIRES WETLANDS AND WETLAND BUFFERS TO BE MAINTAINED IN A NATURAL STATE. REFER TO THE RECORDED CONSERVATION COVENANT (AF#) FOR LIMITATION ON THE MAINTENANCE AND USE OF THE WETLAND AND WETLAND BUFFER AREAS IDENTIFIED IN THE FACE OF THIS PLAT.

LANDUSE TABLE

IMPROVEMENT	QUANTITY (YD)
A/C PARKING	4256 SQ. YD.
A/C TRAILS	3280 SQ. YD.
CONCRETE PLAZA AND PAVING	2483 SQ. YD.
PLAY AREA	715 SQ. YD.
PLANTING AREAS	2595 SQ. YD.
IRRIGATED LAWN	7905 SQ. YD.
UNIRRIGATED GRASSES	35,989 SQ. YD.
LARGE PICNIC SHELTER	1980 S.F.
SMALL PICNIC SHELTER	1000 S.F.
RESTROOMS	633 S.F. (4 STALLS)
VEHICLE PARKING (SEE CIVIL SHEETS FOR PARKING AND STREET IMPROVEMENTS)	57 TOTAL SPACES 39 STANDARD 14 COMPACT 4 HC

