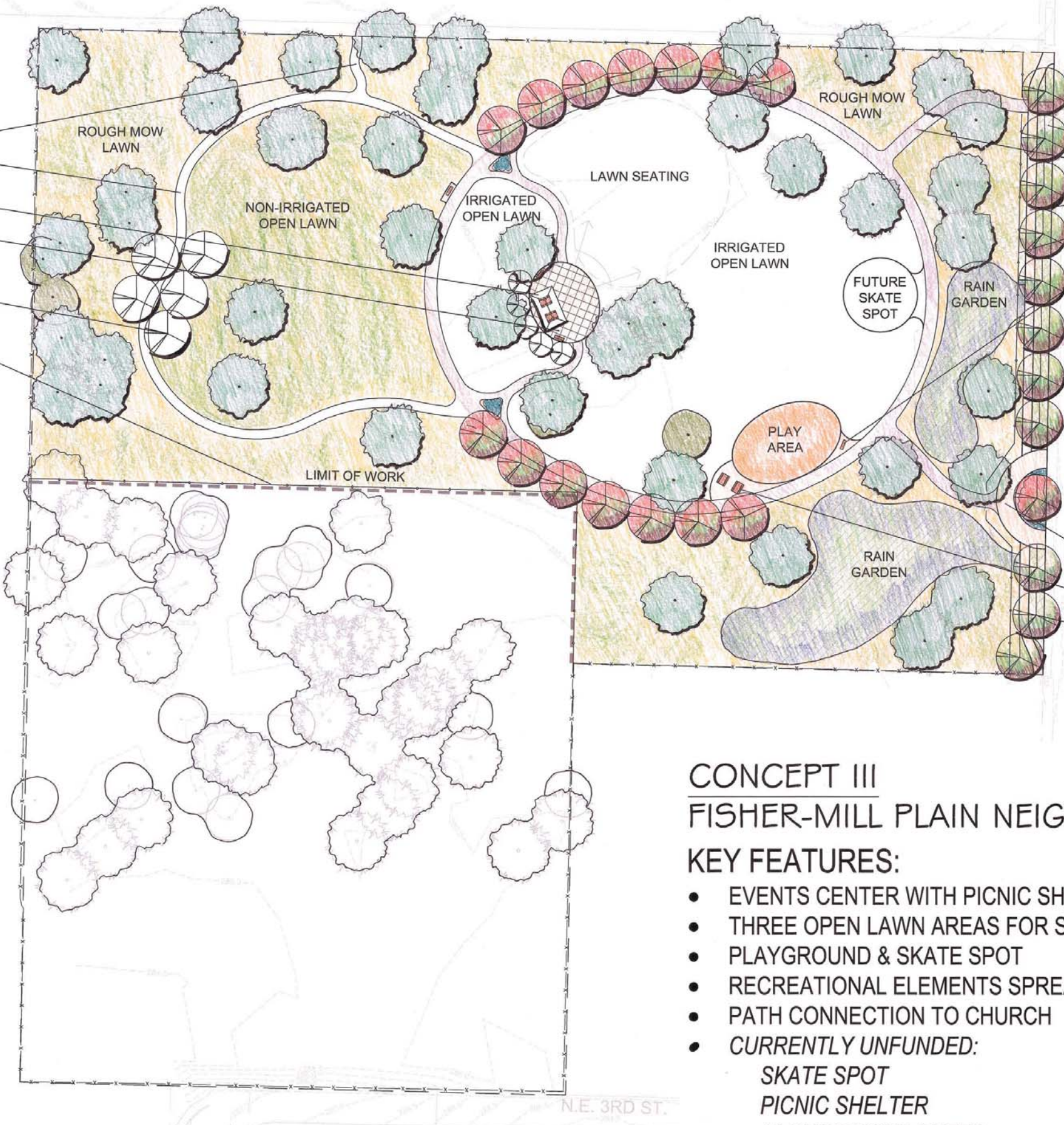


FUTURE PATH CONNECTION TO CHURCH
 FUTURE 6' ASPHALT PATH
 FUTURE PICNIC SHELTER (25' x 15')
 CONCRETE PLAZA WITH PICNIC TABLES (2) AND BENCHES (2)
 FUTURE DECIDUOUS TREES (TYPICAL)
 MAINTAIN PEDESTRIAN CONNECTION TO THE SOUTH



N.E. 5TH ST.

N.E. 172ND AVE.

N.E. 4TH ST.

N.E. 3RD ST.

10' BIOSWALE
 8' ASPHALT PATH
 6' SIDEWALK
 FENCE
 BENCH (TYPICAL)

ENTRY PLAZA
 PICNIC TABLES (TYPICAL)
 DECIDUOUS TREES (TYPICAL)

CONCEPT III FISHER-MILL PLAIN NEIGHBORHOOD PARK

KEY FEATURES:

- EVENTS CENTER WITH PICNIC SHELTER AND CONCRETE PLAZA
- THREE OPEN LAWN AREAS FOR SEPARATE ACTIVITIES
- PLAYGROUND & SKATE SPOT
- RECREATIONAL ELEMENTS SPREAD OUT ALONG PATH
- PATH CONNECTION TO CHURCH
- **CURRENTLY UNFUNDED:**
 - SKATE SPOT
 - PICNIC SHELTER
 - 10 DECIDUOUS TREES
 - ASPHALT LOOP ON WEST SIDE