

Revenue forecast delays construction

Clark County recently received updated financial projections for the Greater Clark Parks District and has determined that construction will not start on Salmon Creek Community Club Neighborhood Park in 2012, as originally planned.

The ongoing economic downturn is projected to cause a significant reduction in the amount of property taxes collected by the Greater Clark Parks District for maintenance and operations of its parks. As a result, the county will slow down its park development program. It is not financially prudent to build all the remaining parks when projections indicate the county may have difficulties maintaining its existing parks.

This park project will be put on hold after the concept planning process is completed this summer. Design, permitting and construction will move ahead when funding is available.

Neighbors will be notified when work resumes, but it may not be for a year or possibly longer. The county will carefully monitor revenues and expenditures, both projections and actual numbers, and make adjustments as needed.

Please visit www.clarkparks.org to learn more, or call (360) 397-6118 ext. 4949.

Visit us on the Web for more information about this park project, including answers to frequently asked questions, or to join the project email list.

www.clarkparks.org/projects/scommunityclub.htm

Salmon Creek Community Club Neighborhood Park Update

June 2011



Public input requested on updated draft park concept plan

Clark County Public Works and Vancouver-Clark Parks and Recreation have developed an updated draft concept plan for Salmon Creek Community Club Neighborhood Park. This plan was developed based on the project budget, site conditions and input received from park neighbors at a public meeting and on the Web in April 2011.

This 4.5-acre park is located on NE 159th Street at NE 20th Avenue, next to Whipple Creek in the Fairgrounds neighborhood. The updated draft concept plan for this park (see inside page) includes the following features:

- Formal park entrance from NE 159th Street
- Small walking path through the park that will eventually connect with a larger regional trail that the county plans to build along Whipple Creek in the future
- Four small active play areas, including playground equipment designed for multiple ages and a small basketball half court/four square court
- Picnic tables
- Benches
- Small areas of informal open lawn for tossing a Frisbee or playing catch
- Future nature play area in the wooded area west of the main entrance
- Only dead or dying trees and invasive plants would be removed. The forested area near the creek would be preserved for wildlife habitat

What's next?

Please provide your comments about the updated draft concept plan to Project Manager Don Andrews by mail, e-mail or telephone **no later than June 14, 2011** (see project contact information below).

Project staff will present the preferred draft concept plan for the park to the **Parks and Recreation Advisory Commission** for action at its next monthly meeting:

Friday, June 17, 2011 at noon
Clark County Public Service Center
6th floor training room (# 679)
1300 Franklin St.
Vancouver, WA

Neighbors are welcome to attend the meeting and provide comments to the Commission about this project. The Commission is the approving authority for all neighborhood park concept plans.

Project contact information

Send input about the proposed concept plan to:

Don Andrews, Project Manager
Clark County Public Works
PO Box 9810
Vancouver, WA 98666-9810

Phone: (360) 397-6118 ext. 4362

E-mail: Don.Andrews@clark.wa.gov

Visit us on the Web:

www.clarkparks.org/projects/scommunityclub.htm

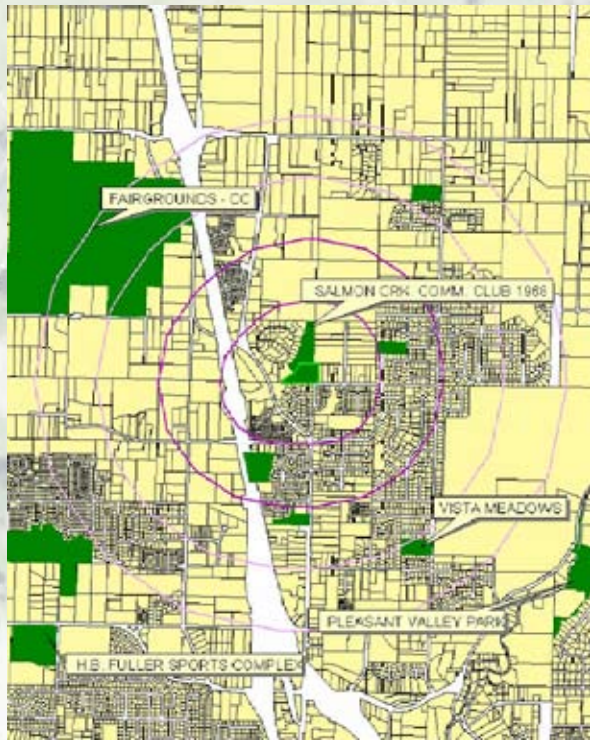
Public Works Department
PO Box 9810
Vancouver, WA 98666



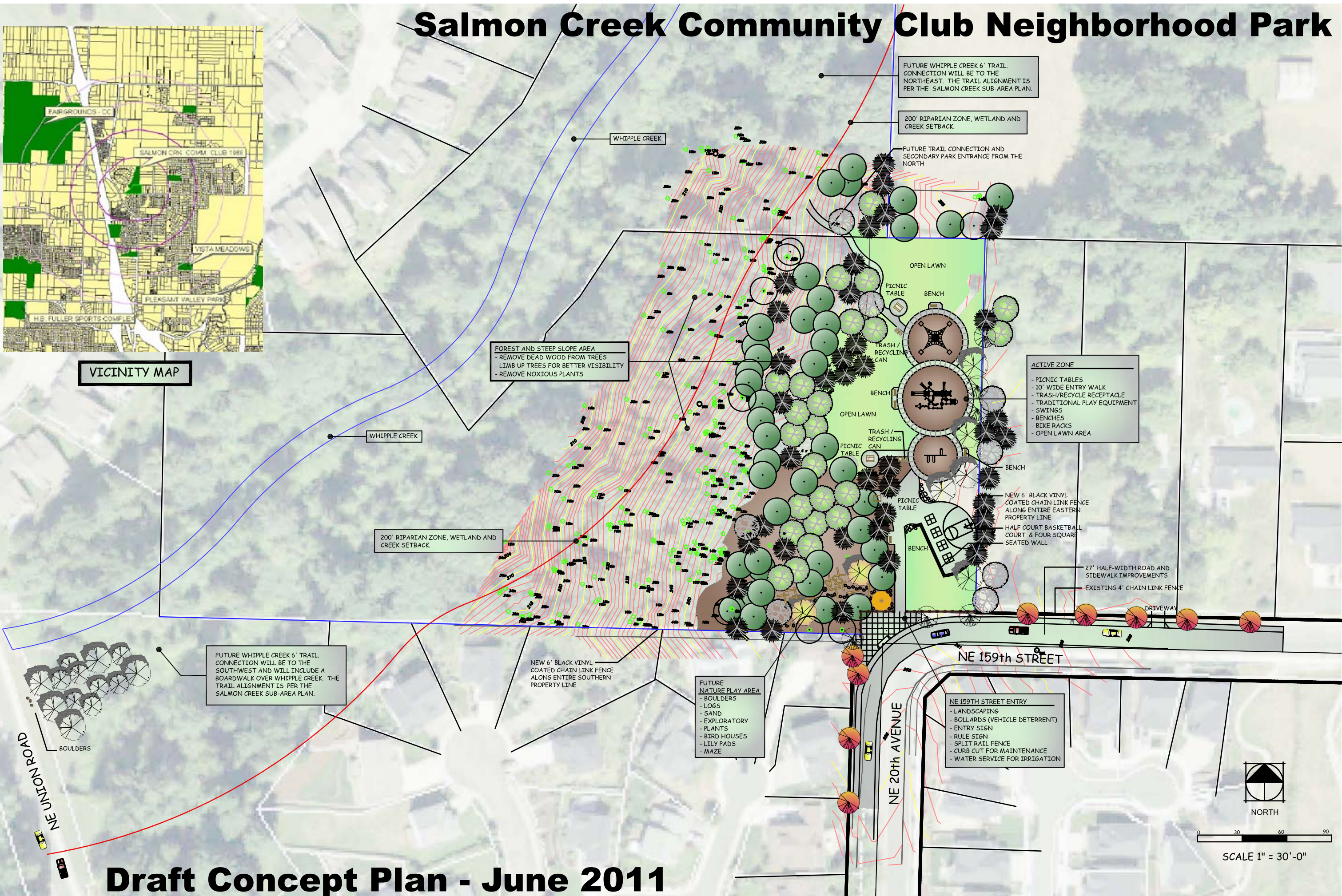
VANCOUVER-CLARK
PARKS & Recreation

Presorted Standard
US Postage
PAID
Vancouver, WA
Permit No. 130

Salmon Creek Community Club Neighborhood Park



VICINITY MAP



FUTURE WHIPPLE CREEK 6' TRAIL CONNECTION WILL BE TO THE NORTHEAST. THE TRAIL ALIGNMENT IS PER THE SALMON CREEK SUB-AREA PLAN.

200' RIPARIAN ZONE, WETLAND AND CREEK SETBACK.

FUTURE TRAIL CONNECTION AND SECONDARY PARK ENTRANCE FROM THE NORTH

FOREST AND STEEP SLOPE AREA
 - REMOVE DEAD WOOD FROM TREES
 - LIMB UP TREES FOR BETTER VISIBILITY
 - REMOVE NOXIOUS PLANTS

200' RIPARIAN ZONE, WETLAND AND CREEK SETBACK.

FUTURE WHIPPLE CREEK 6' TRAIL CONNECTION WILL BE TO THE SOUTHWEST AND WILL INCLUDE A BOARDWALK OVER WHIPPLE CREEK. THE TRAIL ALIGNMENT IS PER THE SALMON CREEK SUB-AREA PLAN.

NEW 6' BLACK VINYL COATED CHAIN LINK FENCE ALONG ENTIRE SOUTHERN PROPERTY LINE

FUTURE NATURE PLAY AREA
 - BOULDERS
 - LOGS
 - SAND
 - EXPLORATORY
 - PLANTS
 - BIRD HOUSES
 - LILY PADS
 - MAZE

ACTIVE ZONE
 - PICNIC TABLES
 - 10' WIDE ENTRY WALK
 - TRASH/RECYCLE RECEPTACLE
 - TRADITIONAL PLAY EQUIPMENT
 - SWINGS
 - BENCHES
 - BIKE RACKS
 - OPEN LAWN AREA

NEW 6' BLACK VINYL COATED CHAIN LINK FENCE ALONG ENTIRE EASTERN PROPERTY LINE
 HALF COURT BASKETBALL COURT & FOUR SQUARE SEATED WALL

27' HALF-WIDTH ROAD AND SIDEWALK IMPROVEMENTS
 EXISTING 4' CHAIN LINK FENCE

NE 159th STREET ENTRY
 - LANDSCAPING
 - BOLLARDS (VEHICLE DETERRENT)
 - ENTRY SIGN
 - RULE SIGN
 - SPLIT RAIL FENCE
 - CURB CUT FOR MAINTENANCE
 - WATER SERVICE FOR IRRIGATION

NE UNION ROAD
 BOULDERS

NE 20th AVENUE

NE 159th STREET



0 30 60 90

SCALE 1" = 30'-0"

Draft Concept Plan - June 2011