



PUBLIC WORKS
ENGINEERING PROGRAM

VANCOUVER-CLARK
PARKS & Recreation

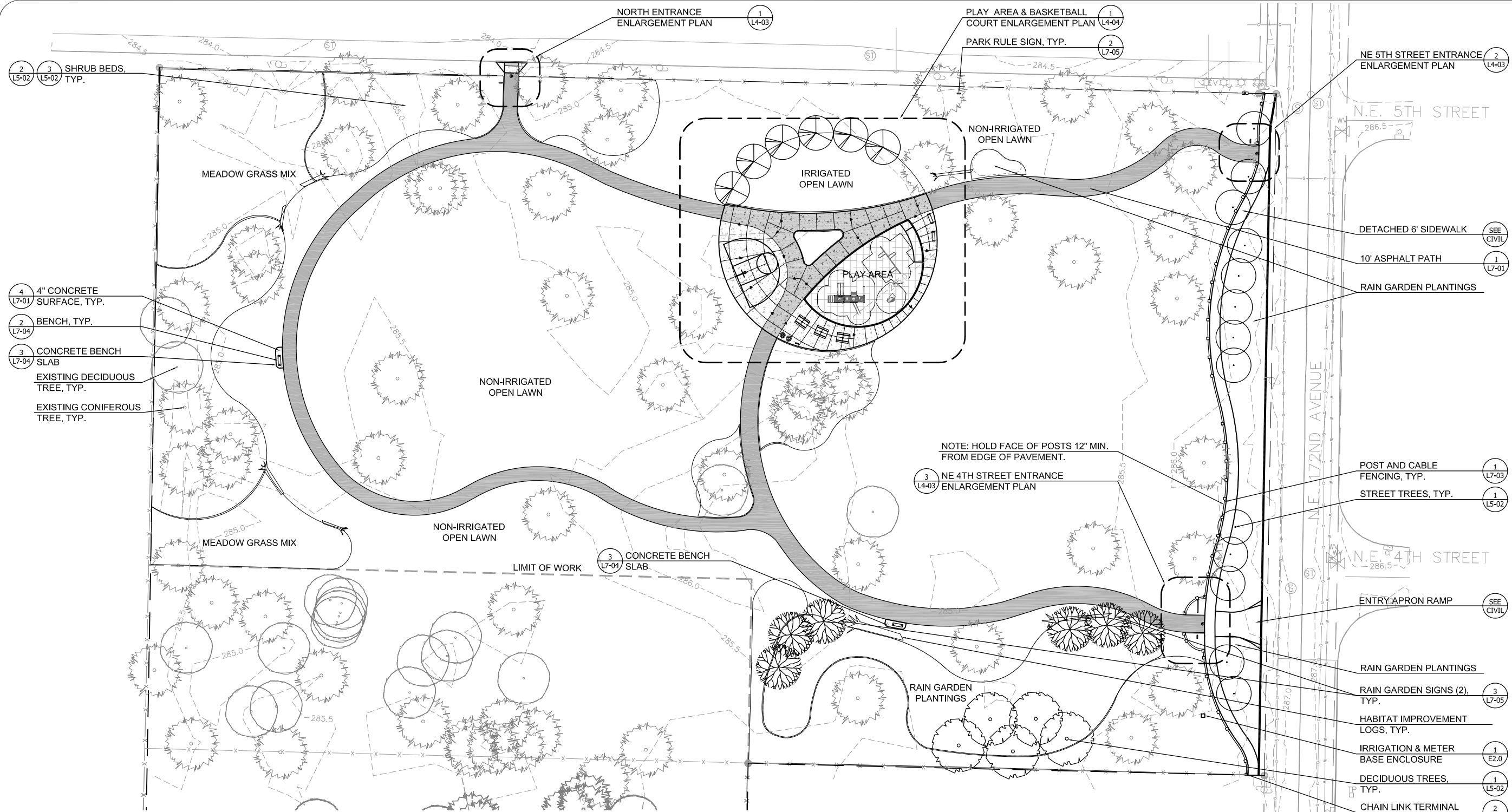
VANDERVORT NEIGHBORHOOD PARK
CONSTRUCTION PLAN

CALL 48 HOURS BEFORE YOU DIG
1-800-553-4344
"It's the Law"
NORTHWEST UTILITIES NOTIFICATION CENTER

PRELIMINARY - NOT FOR CONSTRUCTION

DESIGNED: GA
DRAWN: GA
DATE: 7/01/09

L2-01



- 2 L5-02 3 L5-02 SHRUB BEDS, TYP.
- 4 L7-01 4" CONCRETE SURFACE, TYP.
- 2 L7-04 BENCH, TYP.
- 3 L7-04 CONCRETE BENCH SLAB
- EXISTING DECIDUOUS TREE, TYP.
- EXISTING CONIFEROUS TREE, TYP.

NOTE: HOLD FACE OF POSTS 12" MIN. FROM EDGE OF PAVEMENT.

- 3 L4-03 NE 4TH STREET ENTRANCE ENLARGEMENT PLAN

- NE 5TH STREET ENTRANCE ENLARGEMENT PLAN 2 L4-03
- DETACHED 6" SIDEWALK SEE CIVIL
- 10' ASPHALT PATH 1 L7-01
- RAIN GARDEN PLANTINGS
- POST AND CABLE FENCING, TYP. 1 L7-03
- STREET TREES, TYP. 1 L5-02
- ENTRY APRON RAMP SEE CIVIL
- RAIN GARDEN PLANTINGS
- RAIN GARDEN SIGNS (2), TYP. 3 L7-05
- HABITAT IMPROVEMENT LOGS, TYP.
- IRRIGATION & METER BASE ENCLOSURE 1 E2.0
- DECIDUOUS TREES, TYP. 1 L5-02
- CHAIN LINK TERMINAL FENCE POST RELOCATION 2 L7-03

LEGEND

- LIMIT OF WORK
- ADA ACCESSIBLE 4" CONCRETE PAVING
- ADA ACCESSIBLE 6" CONCRETE PAVING
- ADA ACCESSIBLE ASPHALT PAVING
- ADA COMPLIANT PLAYGROUND SURFACE
- EXISTING CONIFEROUS TREE
- EXISTING DECIDUOUS TREE
- DECIDUOUS TREE
- HABITAT IMPROVEMENT LOGS
- ADA ACCESSIBLE BENCH
- ADA ACCESSIBLE PICNIC TABLE
- TRASH RECEPTACLE
- RECYCLING RECEPTACLE
- BIKE RACK
- BOLLARD
- EXPANSION JOINT
- CONTROL JOINT

NOTES:

- 1) SEE CIVIL PLANS FOR IMPROVEMENTS TO N.E. 172ND AVE.
- 2) HABITAT IMPROVEMENT LOGS TO BE MOVED TO LOCATIONS AS SHOWN FROM EXISTING LOCATIONS ON-SITE.
- 3) IF ANY CULTURAL RESOURCES AND/OR HUMAN REMAINS ARE DISCOVERED IN THE COURSE OF UNDERTAKING THE DEVELOPMENT ACTIVITY, THE OFFICE OF ARCHAEOLOGY AND HISTORIC PRESERVATION IN OLYMPIA AND CLARK COUNTY COMMUNITY DEVELOPMENT SHALL BE NOTIFIED. FAILURE TO COMPLY WITH THESE STATE REQUIREMENTS MAY CONSTITUTE A CLASS C FELONY, SUBJECT TO IMPRISONMENT AND/OR FINES.

